



Product Service

CERTIFICATE

No. Z2 18 06 53696 02184

Holder of Certificate: **KOMPAN A/S**
 C.F. Tietgens Boulevard 32C
 5220 Odense SØ
 DENMARK



Certification Mark:



Product: **Playground equipment**

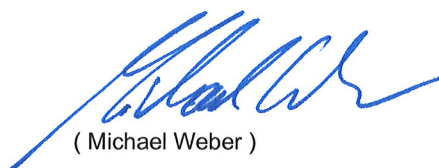
The product was tested on a voluntary basis and complies with the essential requirements. The certification mark shown above can be affixed on the product. It is not permitted to alter the certification mark in any way. In addition the certification holder must not transfer the certificate to third parties. See also notes overleaf.

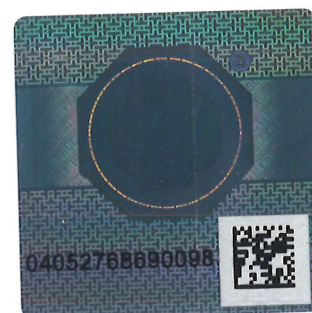
Test report no.: 713127108-20

Valid until: 2023-06-26

Date, 2018-07-03

Page 1 of 2


 (Michael Weber)





Product Service

CERTIFICATE**No. Z2 18 06 53696 02184****Model(s):****ELE400007, ELE400008, ELE400024, ELE400158,
ELE500007, ELE500008, GXY801400, GXY801521,
GXY801621, KPL113, NRO110, M19101****Parameters:**

ELE500007: Balance equipment with two moving directions, turn and seesaw. Basis plate Ø 59 cm, free space under the plate min.

30 cm, max. height over the floor 44 cm.

ELE500008: Rotating basis plate. Basis plate Ø 40cm, height over the floor 19 cm, total height 105 cm.

ELE400007, ELE400008: Rotating base plate on steel legs bedded on plastic shoes.

ELE400024: PE on steel poles.

ELE400158: Rotating basis with lateral bent grip bar.

Basis plate Ø 40 cm, height over the floor 19 cm, total height 105 cm.

GXY801400, GXY801521, GXY801621: Pirouettes: 38 mm steel pipe. Standing area and pipes connected to 100 mm steel foundation with ball bearings.

M19101: Rotating basis with lateral bent grip bar.

Basis plate (Designed like a trefoil)
Ø 40 cm, height over the floor 19 cm,
total height 94 cm.

KPL113: Rotating basis with lateral bent grip bar.
Basis plate Ø 45 cm, total height 161 cm.

NRO110: Posts and beams are made from Robinia wood.
Handles and tubes are made of galvanized or stainless steel.
Ropes are made of plastic covered steel ropes.
Plastic elements are made of HDPE.

**Tested
according to:**

DIN EN 1176-1:2017
EN 1176-1:2017

**Production
Facility(ies):**

63062

Page 2 of 2